

# TRACK WATCH



**OUTBACK SURVEYOR  
EAST GIPPSLAND CLEAN-UP  
LERDERBERG CLEAN UP AUSTRALIA DAY  
PROJECT TALBOTVILLE - PART 2  
4WDING WITH CHILDREN  
VICTORIAN 4WD SHOW**



**MARCH 2017**





Contact us to book a club meeting nights in store with discounts, giveaways and guest speakers

## STORE LOCATIONS

**EPPING** 24 FULLARTON DRIVE

**SHEPPARTON** 7968 MELBOURNE ROAD

**BALLARAT** 4 BALLARAT & CARNHAM ROAD

**PT. LINCOLN** 123 VERRAN TERRACE

**HEATHERBRAE** 5/7 ARCHIBALD PL

**4x4 ACCESSORIES  
TRAILER PARTS  
CAMPING & CARAVAN**

**CLUB MEMBERS 10% OFF IN STORE  
MUST SHOW MEMBERSHIP**

**BRING THIS AD FOR FURTHER 5% DISCOUNT \***

\* No further discounts apply to items already on sale



PH: 03 8401 3776

[www.trekhardware.com.au](http://www.trekhardware.com.au)





## FOUR WHEEL DRIVE VICTORIA

The peak representative body for all Victorian four wheel drivers since 1975

Victoria Association of Four Wheel Drive Clubs Inc.

PO Box 292 Mitcham Vic 3132

Phone 03 9874 7222

Fax 03 9874 7233

Email [office@fwdvictoria.org.au](mailto:office@fwdvictoria.org.au)

Website [www.fwdvictoria.org.au](http://www.fwdvictoria.org.au)

ABN 40 891 301 368

ASSN A0013539S

RTO 21605

Print Post PP 100005076

## BOARD OF MANAGEMENT

### EXECUTIVE

**President** Garry Doyle

**Vice President** Michael Martin

**Secretary** Christopher Whiteside

**Treasurer** Brian Lewis

### BOARD MEMBERS

Lou Catherine, Chris Kershaw, Michael Coldham

## STAFF

**Chief Executive Officer** Wayne Hevey

**Office Administrator** Alison McLaughlin

**Accounts** Karl Norman

**Projects** Myles Brown

**Events Manager** Wayne Hevey

## TRACKWATCH

**Editor** Brian Tanner

**Email** [editor@fwdvictoria.org.au](mailto:editor@fwdvictoria.org.au)

### Individual Contributors

Brian Tanner, Alison McLaughlin, Karl Norman, Greg Rose, Geoff Kenafacke

**Production** Brian Tanner

### Copy Deadline next issue

1st May for June 2017 issue

1st August for September 2017 issue

1st November for December 2017 issue

**Advertising** [gm@fwdvictoria.org.au](mailto:gm@fwdvictoria.org.au)

All material appearing in Trackwatch magazine is copyright. Reproduction in whole or in part is strictly forbidden without prior written consent. Freelance contributions and submissions are welcome by this magazine. No responsibility is accepted for unsolicited manuscripts, photographs, etc. The opinions expressed by contributors are not necessarily those of Four Wheel Drive Victoria. All statements made, although based on information believed to be reliable and accurate, cannot be guaranteed and no fault or liability can be accepted for error or omission. The publisher reserves the right to omit or alter any article or advertisement. Advertisers agree to indemnify the publisher for all damages or liabilities arising from the published material.

Design and Artwork by Brian Tanner

# From the President



2017 has started with a flurry of activity and there's no slowing down. The Board have met twice since the AGM and have already achieved many things. The one thing we are absolutely clear on is that the Board needs to be representative of the Association. Firstly we need to be strategic, that is, we need to have a looking forward. Secondly, we must only focus on things that will directly benefit the Clubs and the Club members.

At our December meeting we established a sub-committee of the Board to focus on reviewing our Association Rules. Great progress has been made and we'll be distributing our results soon. Any changes will have to be accepted by you before they can become our rules. A number of issues are being looked at including membership categories.

Wayne Hevey, Colin Oates and I visited Traralgon DELWP office in January to provide support to the local rangers. At the last Regional Representatives meeting we learned about challenges in the region and in fact across the state. DELWP officers are currently bound by many pieces of legislation, which believe it or not, don't give them adequate powers to challenge those doing the wrong thing. We are going on an active patrol with the rangers over the March long weekend to see first hand what they face in their work. What's this to do with FWDV you might ask? Well this active involvement means we get a stronger working relationship with the DELWP staff. In turn we are being consulted on many more activities affecting the clubs and each of us. We will have a stronger say in tracks, camping areas and regulations involving the many areas we love going into. We will propose a sub-committee of the Ministerial Advisory Committee to advance this involvement.

March will be a busy month as well. We are attending the National Body's quarterly Board meeting. We will be

ensuring that we are well represented and will report back to you all at the first opportunity. We know that nationally there is a proposal to have a national insurance scheme and that our insurance broker Affinity has been asked to bid. I have been very clear with the National President and have advised Affinity, that unless the new proposed scheme is equal to or better than what we have currently - in all aspects - then we will keep our current scheme and not participate in the national program. It will not be a compromise, it will be like for like or no deal. Similarly we will be challenging the member benefits card program. There is a financial impact that ultimately affects each of us so we'll look for real benefits or have this program suspended and replaced with something of true value.

We also have the next Ministerial Advisory meeting in March and will be putting the final touches on the joint strategic plan. As soon as the plan is final we'll share it with each of you. As I said earlier, we will ensure it looks forward as well as providing benefits for all of us. To date we believe this is absolutely the case. The Board will also be holding a planning weekend where we'll translate this Strategic Plan into our Operational Plan giving us all something to focus on including activities over the next few years.

There is also a General Meeting in March being held in Warragul. We'd like to see as many members as possible come along and hear what we have to say and ask questions. Over the next few years we'll rotate these meetings to all parts of the state alternating regional meetings with meetings in Melbourne.

Lots on, and I look forward to catching up with you all over the next year at our many different activities.

Garry



## In this issue

- East Gippsland Track Clearing
- Outback Surveyor
- Safe 4WDing with children
- Victorian 4WD Show - Wandin
- 2017 FWDV Training Calendar
- Werribee FWDC Outdoor Expo



## Greg Rose Wins Kookaburra Award!

The Parks Victoria Kookaburra Awards were held on Sunday 4th December. These biannual awards recognise groups and individuals who have made an outstanding contribution to volunteer work with Parks Victoria.

Greg Rose, Four Wheel Drive Victoria Regional Representative for the Southern Alpine National Park, was the recipient of the Individual Achievement Award for the Eastern Region.

The award seeks to recognise and celebrate the dedication and commitment by individuals who contribute to Conserving Special Places, Connecting People to Parks or Improving Health Benefits through their volunteer work in parks.

Helen Dixon, Parks Victoria District Manager Central Gippsland, complemented Greg on his extensive work as Regional Representative for Four Wheel Drive Victoria and the thousands of

hours of volunteer work he has organised with the Land Rover Owners Club of Gippsland.

Greg is the President of the Land Rover Owners Club of Gippsland and a member of the Land Rover Owners Club of Victoria. He has an association with the Southern Alps stretching for over forty years.

Greg says, "My first exposure to what is now the Alpine National Park was walking into Tali Karng when I was 16. Since then I have explored the area on foot, canoe, trail bike and even, when desperate, a horse. I have been four wheel driving in the area since I was twenty-two. It is important to me that the area is respected and improved by all user groups. As one of the main user groups four wheel drivers have a big role to play in helping Land Managers and educating people in safely using the area."

The winning of this prestigious award highlights the importance to Land Managers of Four Wheel Drive Victoria and the efforts of four wheel drive club volunteers. Additional to the Kookaburra Award, and on the same day, both Greg and his wife Lois were jointly awarded 'Club Person of the Year' of the Land Rover Club of Gippsland in recognition for the huge amount of work they perform for that Club. Greg also writes for various 4WD magazines about the Alpine area and four wheel driving in general.

Both these awards were well deserved!

**Graeme Walsh**  
**Land Rover Owners Club of Victoria**



**Left to right; Roger Fenwick Parks Victoria Acting Regional Director Eastern Victoria; Dannica Shaw Parks Victoria Ranger Heyfield; Lois Rose LROCG/LROCV; Greg Rose LROCG President, LROCV Member, Four Wheel Drive Victoria Regional Representative Southern Alpine National Park; Helen Dixon Parks Victoria District Manager Central Gippsland; Mike Dower Parks Victoria Area Chief Ranger Foothills and Southern Alps.**





## Building a Better Land Cruiser

*How could an 'off the shelf' 4WD be improved, and made that little bit more touring ready?*

I guess we all could offer suggestions, but a small group from the Toyota Land Cruiser Club of Victoria were invited in late 2016 to offer just such advice to the Japanese design and production team of the next Land Cruiser.

The team flew in especially to meet with the Land Cruiser members, plus to spend one day with a German made 200 Series, equipped with various bits and pieces (that they were not prepared to elaborate on) – which they put through its paces at Walhalla.

The Japanese team especially wanted to know how members set up their vehicles for outback touring and the rationale behind many of our choices in accessories. They didn't fully appreciate the distances we can travel, the remoteness of areas visited and showed a genuine interest in trying to address some of our concerns with current Toyota models in future vehicles.

Like something out of the movies we supplied 5 Land Cruiser wagons that were seriously set up for outback touring. We met at a Level 5 Secure site at Toyota Headquarters in Port Melbourne, where the vehicles were driven through 3 large and very secure gates to a central courtyard that could not be observed from outside. Prior to this we had to deposit mobile phones, laptops, memory sticks and other recording devices with security!

We briefed the large Japanese design contingent on what modifications each vehicle had – one had in excess of 100 – how we use them, why we need to make such modifications and showed them on a map of Australia the remote areas we had visited.

Many of the suggestions related to the GVM and carrying capacity of the stock standard Cruiser and the need to carry

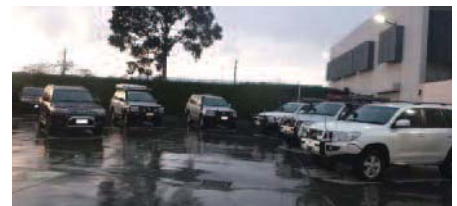


**TLCCV members with some of the prototype show vehicles**



extensive loads when touring. Also connectivity to other devices was raised among many topics. Thereafter the team crawled all over each vehicle, took many photos and posed for group photos.

An interesting sideline to the visit was our access to 5 Toyota prototypes and motor show cars that Toyota had produced. These included the first Toyota HiLux TRD and the show car HiLux displayed at the 2016 Bangkok Motor Show. There was also a prototype sports car and we were given strict instructions to look, but not to try and sit in any of the vehicles. Of course my wife, Sandra was found sitting in the said prototype, which luckily our guests saw the funny side of!



We enjoyed dinner at a nearby hotel, where we showed a comprehensive movie and slide show of Club activities and touring. Despite many attempts and the refilling of glasses of red, we could not get any of the Team to confirm or deny that there will be Land Cruiser 300 Series. We will have to wait and see, but it will be interesting to see if any of our suggestions are incorporated.

**Brian Tanner**  
**TLCCV**

### TRACKWATCH CONTRIBUTIONS

Contributions to Trackwatch are welcomed. They should relate to a club activity, interesting destination, historic event, etc.

1. Type your story in Word with appropriate paragraphs and headings.

No fancy fonts, colours, borders or imbedded photos in a single document.

2. Photos need to be of good quality and high resolution. Do not resize, crop or embed as part of the story. Send images as separate jpeg files.

Ed

### Some Parks Victoria Statistics.

Victoria's National Parks have 37.8 million visitors a year.

Across 150 Parks there are 220,947 volunteer hours per year.

The volunteer hours given a monetary value would be 6.6 million dollars.

Parks Victoria manages 4.1 million hectares, which is 18% of Victoria.

That is:

- 45 National Parks.
- 26 State Parks.
- 60 other parks.
- 30 metropolitan parks.

2,700 reserves and natural features. Parks Victoria manages assets with an estimated replacement value of \$1.8 billion. This includes:

- 46 visitor centres.
- 738 shelters.
- 832 toilets.
- 509 viewing lookouts.
- 59 playgrounds.
- 15,500 km of road.
- 1,336 pedestrian and vehicle bridges.
- 3,700 km of walking trails.
- 209 piers and jetties.

**Greg Rose**





### BATTERY TRAYS

Huge range of auxiliary and main replacement trays, electroplated and purpose built.



### DUAL BATTERY MANAGEMENT

Complete solutions to run all your 12V kit without discharging starting battery.



### BATTERY MONITOR/ PROTECTOR

Know exactly how your batteries are performing in a dual battery system.



### PREMIUM FLURO

The best 12 Volt portable fluro light with 75W (equivalent) light output.



### FRIDGE SLIDE/ TILT SLIDE

To suit Engel & Waeco fridges for mounting and easy access to your fridge.

**All Aussie Made!**



**piranha**  
OFF ROAD PRODUCTS

[www.piranhaoffroad.com.au](http://www.piranhaoffroad.com.au)

For advice call Piranha on 03 9762 1200.  
Visit: [www.piranhaoffroad.com.au](http://www.piranhaoffroad.com.au) for a full dealer listing.





# Far East Gippsland Track Clearing

By Peter White

*Yarra Valley 4X4 Club returns to Far East Gippsland for its 3rd year of Track Clearing.*

Eleven members of Yarra Valley 4X4 Club spent the last 10 days in October 2016 clearing some 200km of tracks East of Omeo in preparation for the Summer Track opening and to ensure safe and rapid access for fire and emergency crews.

There were less small trees and saplings across the track this year but more large to very large trees. Many of the tracks took several days to clear which meant a lot of track driving backwards and forwards, the team covered over 650km and each vehicle

used almost a tank of fuel on the tracks during the 10 days on site.

We were able to operate two teams on several of the days further helping our progress.

A base camp was set up at Native Dog Flat. The camp is high in the Eastern Alps at 1200 metres. This presented the first major challenge of the week, 150mm of snow falling on the opening Saturday. The drive into camp was more like a Winter Snow Trip.







For those interested in statistics here are some impressive numbers –  
Total hours worked – 363 hrs  
Total hours travelling – 114 hrs  
Total Kilometres driven (Work & Travel) – 9397 km  
We cleared walking tracks into Cowombat Flat and into the Forlorne Hope Wilderness area to assist with emergency access as well as many 4WD tracks.

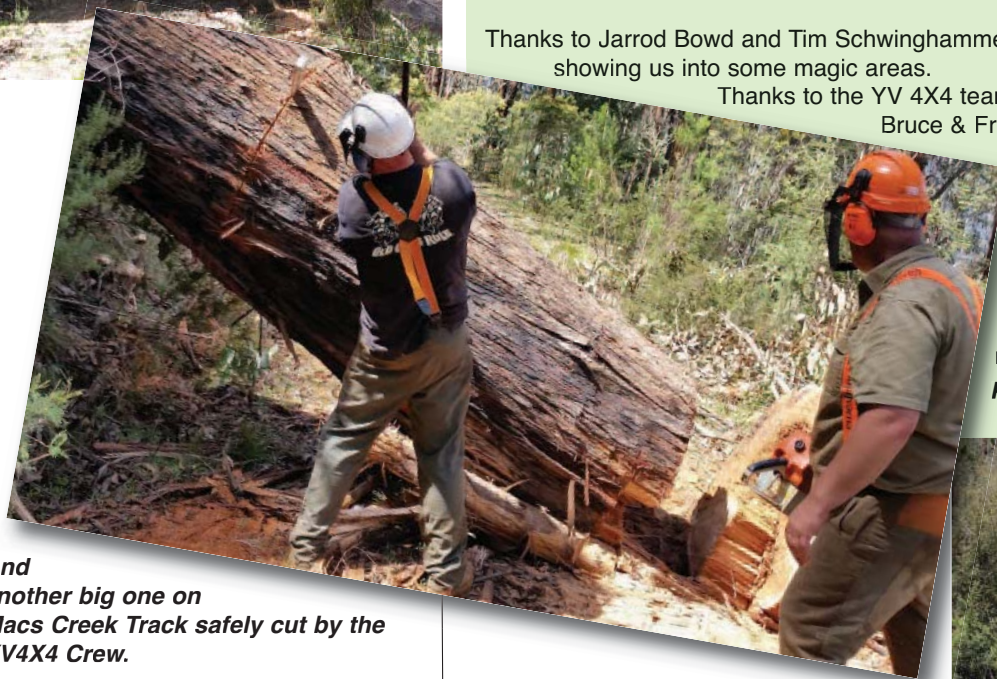
Thanks to Jarrod Bowd and Tim Schwinghammer from Parks Victoria, Omeo for showing us into some magic areas.

Thanks to the YV 4X4 team for their tireless efforts.

Bruce & Francis Unmack, Peter Aartsen, Graeme Geelan, Paul Beatson, Steve Bennett, Peter Briggs, Matt Vermeulen, Barry & Jenni Tanner.

We all enjoyed the opportunity to help the Omeo Parks Victoria team and are already planning next year's trip.

**Peter White, Trip Leader.**



And another big one on Macs Creek Track safely cut by the YV4X4 Crew.



[www.cando4x4.com.au](http://www.cando4x4.com.au)

Parts, accessories & service for all **4x4** vehicles

**NEW Parts & Accessories Store**

**NOW OPEN at:**

131-139 Main St Lilydale

[sales@cando4x4.com.au](mailto:sales@cando4x4.com.au)

**Service & Fitting Centre**

**STILL OPEN at:**

145-147 Main St Lilydale

[service@cando4x4.com.au](mailto:service@cando4x4.com.au)



**9739 5000**





**TOYOTA LAND CRUISER CLUB OF VICTORIA**

## ***Clean Up Australia Day***

# **LERDERBERG STATE PARK BUSH CLEAN UP**

As part of their community support activities, the Toyota Land Cruiser Club of Victoria joined forces with Parks Victoria to assist in a clean up in Lerderberg State Park as part of the "Clean Up Australia Day". Spearheaded by TLCCV Geelong Branch members the convoy left Geelong and met with Bacchus Marsh area Parks Victoria Ranger Charlie Dickie.

Charlie led the convoy into the park to an area with a notorious record as being a favoured dumping ground - often by locals! - where we were confronted with an enormous amount of rubbish. Charlie had arranged for the delivery of two enormous skips, and said he didn't expect us to fill them. Here he was later to be proven wrong, with both skips bulging with collected junk! Everything from bottles, clothing, shoes,

carpet, plaster, vehicle parts, and all manner of other things had been strewn over a large area adjacent to the park road, creating a major eyesore. Further down the road was a large quantity of electrical cabling from which the copper wire had been stripped. Two members- Greg and Dean - tackled this and managed to fill a large tandem trailer, which was later unloaded into one of the skips.



**Local Parks Victoria Ranger, Charlie Dickie with TLCCV Australia Day Clean Up co-ordinator Alison Williams**



*Before*



*After*





The collection started with a safety briefing, and distribution of collection bags provided by the Clean Up Australia organisation via the Moorabool Shire Council.

Thereafter followed a few hours of hard yacka as members collected rubbish into the bags and transferred them into the skip. The club put on a BBQ lunch, with Charlie dropping in to enjoy a sausage, after having been drawn away to put out three fires that had been left burning in campsites by careless campers. Some people just never learn!

With skips full, and members ready for a break the activities concluded mid-afternoon with Charlie showing us some tracks for later use. All up it was a great day, with an outstanding result.

**Brian Tanner**  
TLCCV



*Before and after the clean up*



*One of 2 enormous skip loads of rubbish collected*



## News

### **A new project which aims to further enhance infrastructure and signage at the historic Stringybark Creek Reserve, near Mansfield, has commenced.**

Department of Environment, Land, Water and Planning (DELWP) is working with Victoria Police and other stakeholders to better reflect the historical importance of the site.

Stringybark Creek Historic Reserve is the site where three policemen, Sergeant Michael Kennedy, and Constables Thomas Lonigan and Michael Scanlan were killed while on duty on October 26, 1878 by a group that became known as the Kelly Gang.

"The project includes the construction of a new walking trail in the locality of where the fourth member of the police party, Constable McIntyre escaped and Sergeant Kennedy was later killed," DELWP Goulburn District Manager Lucas Russell said.

"This is an extremely important site from both a historical perspective and for the families of the policemen who were killed," Mr Russell said.

Next year marks the 140th anniversary of the deaths of the policemen who were shot while searching for Ned and Dan Kelly in the Toombullup State Forest after warrants were issued for their arrest for horse theft in March 1878.

The deaths of the three policemen marked an escalation in the search for the Kelly brothers and their associates Joe Byrne and Steve Hart. The four were declared outlaws and became known as the Kelly Gang. Following an extensive 20-month manhunt across Victoria and New South Wales, Ned Kelly was captured during the final confrontation between the Gang and police at Glenrowan on June 28, 1880.

Ned was later tried and hanged for the murder of Constable Lonigan, while his brother Dan and associates Joe Byrne and Steve Hart perished in the siege. The works are expected to commence later this year.



## WERRIBEE DISTRICT 4WD CLUB

# Huge product expo success

Recently the Werribee & District 4WD Club hosted a huge product expo inviting major 4x4 brands and local businesses to come along and display to 4x4 club members from all over Victoria. The whole night went really well with the Werribee CFA there to show off the Rescue Unit along with their 200 Series forward control vehicle both on display, kids loved the jumping castle and the sausage sizzle went off a treat. Robert Pepper had a big group for his informative 4x4 talks in the hall with all eyes watching the graphics coming up on the multimedia. It was really nice to see so many new member sign up's on the

night ready to get out and have fun on the tracks. We had lots of fun activities with the night ending with the major raffle draw raising money for our charity partner the Peace of Mind Foundation supporting people with Brain Cancer. We would like to thank the 4x4 Industry for donating great prizes to the raffle. The major prize was a getaway package from our friends at Eldee Station, along with awesome prizes from REDARC, LIGHTFORCE, WARN, CYCLO and RHINORACK. Our amazing club would like to thank all the exhibitors who gave up their time to

put on really good informative displays with lots of bargains. A huge Thanks to LIGHTFORCE – MSA 4X4 – WARN EXTREME 4X4 HOPPERS CROSSING – IRONMAN4X4 – AUSSIE DISPOSALS WERRIBEE – ARB HOPPERS CROSSING – MAYWEST CARAVANS – ROBERT PEPPER - WERRIBEE TOW BARS – RHINORACK – COOPER TYRES – WERRIBEE AUTO ELECTRICS – CYCLO AUSTRALIA. Let's not forget the Werribee Fire Brigade, Simon Christie 4wdTV and the members of the Werribee 4x4 club for putting together a great night.



## "Outstanding Contribution" Award for LROCG

Mike Dower, Parks Victoria Area Chief Ranger, Foothills and Southern Alps has presented the Land Rover Owners Club of Gippsland with an "Outstanding Contribution Award". The award was to recognise the significant volunteer work undertaken by the Land Rover Owners Club of Gippsland over several years. Mike Dower outlined the tasks the members had performed, from the very first venture in which three club members helped remove two large trailer loads of rubbish from Kellys Hut and McMichaels Hut on Kelly Lane, to the current major work building assets like fire rings and picnic tables in signifi-

cant camping areas in the Southern Alpine National Park. The Club regularly has up to twenty members in multi-day joint ventures with Parks Victoria staff. Concentrating on the areas north of Licola and Dargo the club members have worked at the Wellington River campgrounds, Kelly Lane, The Pinnacles, Wonnangatta Valley, Howitt Hut, Moroka Hut, Horseyard Flat and a two year project to improve the popular Talbotville area. Mike stated that the thousands of volunteer hours contributed by the club have had a major benefit to Parks Victoria and all users of the Alpine National Park. The volunteer work contributed by



stakeholder groups, significantly those four wheel drive clubs affiliated with Four Wheel Drive Victoria, make the Park a better, more inviting and safer place for everyone. Mike invited Lois Rose and Ian Blake, who were on the very first clean up day, to accept the award on behalf of the club.  
**Greg Rose**



# The new Amarok V6 TDI.

Do you remember what power feels like?



## Tough comes from within.

The V6 is back and it's back in a big way. The latest generation 3.0 litre V6 TDI engine produces a class leading 165kW of power and 550 Nm of torque. With the Overboost feature, that reaches up to 180kW—perfect for overtaking. And of course, there's more stopping power, too. The Amarok V6 is the only ute in its class with front and rear ventilated disc brakes for improved braking performance. With brilliant new features and legendary Amarok toughness, the thrill of driving a V6 has finally returned.



**Commercial  
Vehicles**





FRANK J. McCOY

# OUTBACK SURVEYOR

*Frank J. McCoy is a name that most of us won't recognise, but one that four-wheel drivers owe a debt of gratitude.*



Frank surveying a route across the Simpson Desert



Dalhousie, when it was more or less intact





You see Frank was a map maker, surveyor, and explorer, and during 1951-52 laid the first survey pegs across the Simpson Desert and around Lake Eyre, that in turn allowed accurate aerial photography and the creation of 50:1000 and 100:000 maps of central Australia that many of us have used. Frank learnt his trade under a master surveyor, and through a correspondence course to Melbourne. Before gaining his surveying qualification, Frank was a regular traveller around Central Australia, and in particular the Simpson Desert. He married in 1951 and as he was moved around Australia on surveying jobs with

National Mapping, was often out in the field for months, leaving his wife, and later children home alone. In 1951 he commenced surveying the Simpson, and while Len Beadell was working further west, he thankfully ran into him. The truck that Frank was driving had a gearbox problem, which resulted in traditional Aussie ingenuity that saw gears changed with a pair of pliers. Len had an oxy-set and they were able to solve the problem between them. While often following Len's tracks he never crossed paths with him again.

Frank's small team drove an International C1300-4x4 truck – which he swore by for its capability – a Forward

Control Land Rover, and sometimes a supplies truck that followed. On each major dune across the Simpson, they would place survey pegs at a set distance apart, and then move along the dune and repeat the procedure. They made astrological star readings along the way, ensuring accuracy – which was often different to the ground survey. As Frank described it, "It was like a paid holiday", so much did he enjoy the work!



*Bogged!*



*Desert camp*



The role of the surveyor was to undertake 2 main tasks: the often initial mapping of virgin lands and secondly to check, update and improve the accuracy of maps that existed primarily based on astrological observation. The results of the astrological surveys were compared with on the ground surveying across vast sections of desert.

On one trip he scored 2 Land Rovers from Maralinga, one with a distinctive black and white chequered pattern on it that many might have seen in Beadell's books. The Land Rover had the trademark Beadell 2 front bars.

On occasions they worked from a base camp in the desert, and others living from the back of his Land Rover. On field trips he would often be away in the desert for 3-5 months, but had the luxury of a 5-ton supply truck. They carried lots of water and tins of food to last the duration. There would be tins of cheese, butter, dry food and treacle, dried apricots, rice and flour, Bully beef and damper, and on occasions they would score meat from some stations. The surveyors worked in pairs, with up to ten surveying teams in the field together.

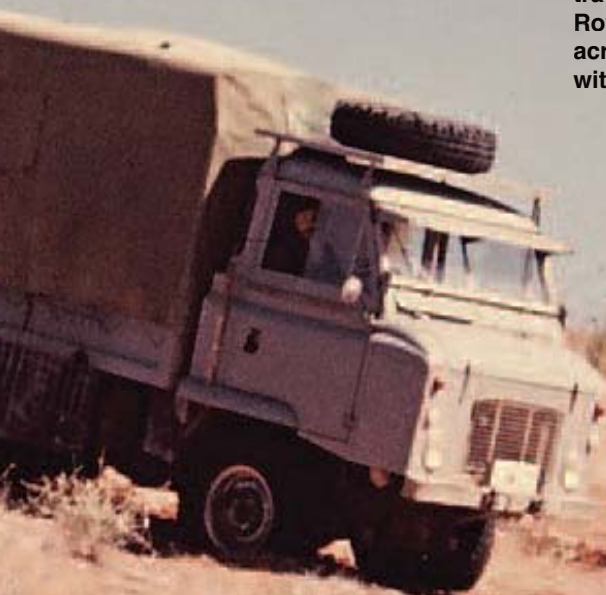
His favourite vehicle was the International 1300 truck, which he said was very good at crossing the sand. It was fitted with chunky Michelin tyres that were run at around 8 pounds, which saw it easily traverse dunes. As for the Land Rovers, Frank said getting them across often required a lot of work with the Tirfor!

Frank returned to the Simpson in 1970, following the French Line. On this trip he drove the C1300 International and carried sand ladders that assisted in the soft sand. He suffered the misfortune of breaking the front universal and finished the trip in 2WD. He noted that Poepell's Corner had been moved from its original surveyed location, and that the track hooked a little further to the north to Birdsville.

Frank's tale is one of many unsung heroes that have contributed so much to opening up the Outback for us all to safely visit and traverse.

*Frank was a guest of the Toyota Land Cruiser Club – Geelong Branch – where he addressed an appreciative audience.*

*Brian Tanner*



*Beadell's old Land Rover*



*All alone camped in the Simpson*

*Photos courtesy Frank McCoy*



**Another successful Victorian 4WD Show has been conducted again by the Land Rover Owners Club of Victoria, the 39th one in fact.**

Around 4,000 people were at Wandin this year for the annual one day event that enjoyed good weather amidst blue skies, that is until the rain hit around Sunday lunchtime causing people to scatter and depart.

Although the big Caravan & Camping Show was starting just a few days after this Show quite a large range of exhibitors and 4WD Clubs were still supportive of this Show. There were a lot of exhibitors there selling a vast diversity of camping and four wheel drive related items. People appeared to enjoy themselves, many taking advantage of bargains being offered by exhibitors; and again 12 volt fridges being just one such item that were selling in big numbers.

Several new vehicle manufacturers were there on the day including Mercedes Benz, Toyota and Iveco, plus many of the usual and quite a few new exhibitors of four wheel driving and camping equipment, with several from interstate. In addition to these people there were over 120 club members who volunteered in so many ways performing a wide variety of roles including ticket sales, ticket collection, site ushers, adventure circuit management and drivers, catering, facilities construction, First Aid etc, site set-up on the day and site layout and mark out on the previous weekends.

This year the event had a new Organiser in Steve Fitzgerald who took on the big task for his first time and did it very well.

The day after on the Monday saw a bedraggled team of eight doing the final site cleanup in the rain and mud, whilst also returning hired equipment all around Melbourne such as Gators, generators, VMS sign boards, freezer units, etc. Twenty four hours after the Show the site was clean and empty.

The organisers felt the day was practically problem free due to a lot of pre-planning by the team, and from all reports everything went well on the day and prior to it, with all club members working well as a team to see that it ran well - which it did.

**Graeme Walsh**  
**Pics: Greg Rose**



# 2017 Victorian 4WD Show

## Sunday 19th





# D Show - at Wandin

h February





# FIT OUT YOUR 4X4

**WITH IRONMAN 4X4**

Commercial Deluxe Bull Bar	<b>\$1380</b>
Monster Winch	<b>from \$795</b>
Side Steps and Rails	<b>\$780</b>
Rear Protection Tow Bar	<b>\$975</b>
Underbody Protection	<b>\$451</b>
Big Bore Exhaust Upgrade	<b>\$1245</b>
Long Range Fuel Tank	<b>\$885</b>
ABS Canopy	<b>\$2950</b>
Air Force Snorkel	<b>\$320</b>
Blast LED Driving Lights	<b>each \$275</b>
Suspension Upgrade	<b>from \$1417</b>



Prices do not include freight or fitting. Prices are subject to change without notice

## SAFER, STRONGER, SMARTER

For your nearest distributor call 1300 731 137 or visit [www.ironman4x4.com](http://www.ironman4x4.com)





# TRAINING COURSES 2017

## BOOK ONLINE

Open to all club members, the general public and corporate organisations.  
Browse courses online at [www.fwdvictoria.org.au](http://www.fwdvictoria.org.au) and call the office to book on (03) 9874 7222

### PROFICIENCY COURSES



- Tuesday 28th March - PC1704014 - Theory
- Saturday 1st April - PC1704014 - Practical
- Tuesday 2nd May - PC170506 - Theory
- Saturday 6th May - PC170506 - Practical
- Friday 2nd June - PC17063 - Theory
- Saturday 3rd June - PC17063 - Practical
- Tuesday 25th July - PC170729 - Theory
- Saturday 29th July - PC170729 - Practical
- Tuesday 15th August - PC170819 - Theory
- Saturday 19th August - PC170819 - Practical
- Tuesday 12th September - PC170916 - Theory
- Saturday 16th September - PC170916 - Practical
- Tuesday 17th October - PC171021 - Theory
- Saturday 21st October - PC17021 - Practical
- Tuesday 14th November - PC171118 - Theory
- Saturday 18th November - PC171118 - Practical
- Tuesday 1st December - PC171202 - Theory
- Saturday 2nd December - PC171202 - Practical

### WINTER DRIVING COURSE



- Friday 4th August - PC170806
- Saturday 5th August - PC170806
- Sunday 6th August - PC170806

### CPR UPDATE & LEVEL 2 FIRST AID COURSE



- Saturday 13th May - FA170513

#### Training Course Refund Policy

Situations occur where for various reasons courses are cancelled by Four Wheel Drive Victoria (FWDV) or students need to cancel. Below describes the refund policy that is applicable.

**Fee refunds:** If students are unable to attend the course that they are registered for, the following refund fees below apply:

- 30 days prior - less 10% of course cost; • 29 days - 15 days - less 25% of course cost; • 14 days to 8 days - less 50% of course cost; • 7 days prior - no refund allowed

*Refund applications must be made in writing to FWDV.*

FWDV agree that they will allow for one transfer in a 12 month period to another course date without penalty, with a minimum of 8 days notice, (see below).

**Transfer to other courses:** Students can transfer to any other course up to 8 working days prior to commencement at no cost. Students transferring to another course 7 working days or less prior to commencement will be required to pay a transfer fee of \$50

**Course Cancellations:** FWDV will make a full refund of all fees paid should a course be discontinued. FWDV reserves the right to cancel a course if a minimum number of participants are not achieved or for Occupational Health and Safety reasons. Should the students desire to take an alternative course with FWDV, fees will be fully transferrable to that course, for one transfer in a 12 month period. In the event of a course for which the student was enrolled being unavailable or no acceptable alternative course is available, fees are fully refundable.

### FOR ALL BOOKINGS & ENQUIRIES

PHONE (03) 9874 7222 or email: [training@fwdvictoria.org.au](mailto:training@fwdvictoria.org.au)



### History

## Former FWD Victoria HQ falls

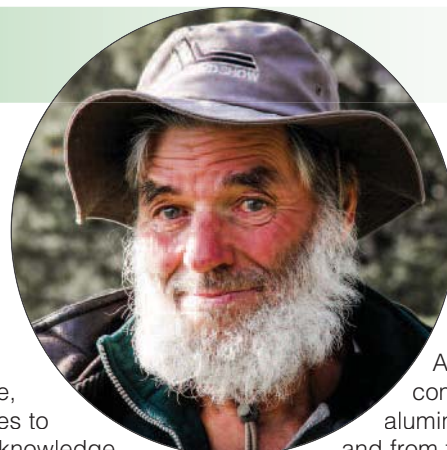
Thanks to Alison McLaughlin for these photos







## 51 Year Active Member Land Rover Owners Club of Victoria



In 1965 Jim bought his first Land Rover, a 1960 Series 2 Long Wheel Base (LWB). As soon as he obtained his licence at 18 he joined the Land Rover Owners' Club of Victoria, a club that his older brother had previously joined. Over the years Jim has travelled on club trips across Victoria, into the High Country, across Australia, across deserts, into the snow and to many remote places, some no longer available to the 4WDer such as Riggall's Spur close to Lake Tali Karg and the Calvert Ranges on the Canning Stock Route.

Jim's first trip was a hard and challenging one into Wonnangatta where he broke an axle and ran out of fuel. Wonnangatta back then was much harder than it is now as the tracks were on the valley floor and there were many long bog holes to traverse. With Jim's



long active involvement in club trips, he has probably been on more club trips than anyone in Australia.

Jim is a valuable Tail End Charlie and still regularly provides advice and assistance, from mechanical issues to driving and camping knowledge on trips. Over the years Jim has fashioned a fire drum with many cooking features which he has generously shared with fellow trip participants. Some memorable club trips include the club's first crossing of the Simpson Desert in 1980, his first trip to Cape York when a chassis was bent and repaired by the roadside and the crossing of the Jardine River before the public ferry was available and the West East Crossing of Australia with Mike Leyland. Jim says that the tracks are easier than in the past due to Seasonal Closures and run off drains protecting tracks from winter damage.

From fires and floods, track clearing and other community assistance, Jim has always contributed. A recent discovery of some 1990 film of the 4WD Show at Wandin saw Jim doing the chain saw demonstration. Joining the Mobile Landcare Group, Jim still assists with their many activities, impressing the various land managers and volunteer environmental groups with his ability to fashion solutions to many problems faced. At track clearing on the

Deddick Trail in 2015 it was Jim on the end of a crowbar moving boulders in a river so the Parks Vic vehicle and rest of the convoy could proceed.

About 1988 Jim commenced collecting aluminium cans in the bush and from fellow trip participants on trips and at events, selling the cans to raise funds for the Royal Flying Doctor and now also the Cancer Council.

Other 4WDs owned by Jim include a Series 3 LWB Land Rover, a 1980 Stage 1 V8 Land Rover Tray, a Toyota 75 Series purchased 2nd hand in 1989 (retired after 800k kms) and his current vehicle another 75 series Toyota Tray. With the restoration of a 1956 Series 1 LWB (with some parts from other models) Land Rover ute restoration completed, Jim will happily join the LROCV Series Register on club outings. Jim has also proudly restored and regularly shows his late father's 1949 Bedford truck that was used for a fruit and vegetable round

I know that I was very grateful to Jim on my first club trips, providing assistance and advice and after thousands of kilometres of club trips Jim's presence on a trip is still much appreciated.

**Prue Hasler**



Leyland Bros 40th Anniversary 2015

### Ballarat (District) 4WD Club Celebrates 40 Years 1977 - 2017

The Ballarat 4WD Club invites all past and present members to their 40th Year Club Celebration.

Held at Smythesdale on Saturday 8th and Sunday 9th April, 2017.

For more information email:  
[secretary@ballarat4wdclub.org](mailto:secretary@ballarat4wdclub.org)

**arbormaster**  
PARKS & GARDEN EQUIPMENT

4 Scoresby Rd  
Bayswater, VIC 3153  
Tel 1300 027 267

PROUD  
SUPPORTER  
OF FOUR  
WHEEL  
DRIVE  
VICTORIA



STOCKIST OF THE FULL RANGE OF  
HUSQVARNA OUTDOOR POWER PRODUCTS

Chainsaws  
Blowers  
Brushcutters  
Ride On Mowers  
Hedge Trimmers  
Traffic Safety Equipment

Safety Clothing & Gear  
Chainsaw Accessories  
Chainsaw Sharpening Tools  
Oils & Lubricants  
Tree Climbing Equipment  
Ropes and Rigging Gear

**Husqvarna**

Visit our showroom  
Mon - Fri, 8:30am to 5:00pm  
Saturday, 8:30am to 1:00pm

SECURE 24/7 ONLINE SHOPPING AT  
[www.arbormaster.com.au](http://www.arbormaster.com.au)





## SUMMER TOURING -

# Southern Alpine National Park

The summer of 2016/17 has been largely perfect for four wheel drive touring in the southern side of the Alpine National Park. The weather has been kind and at the time of writing this, the area had not been impacted by fire. Apart from peak times visitor numbers seem to be down this year.

Entering the Park from Heyfield and Licola there are many excellent camping sites along the Wellington River. Easily accessible, these sites usually have basic facilities; toilet, picnic tables, fire pits and flat grassy areas to pitch a tent, roll out a swag or park a camper trailer. Some of the sites are large enough for a club to base camp at and head off on day trips to the maze of four wheel drive tracks to the north. The Wellington River is near all the camping sites and a great place to refresh after a day on the tracks.

The Dargo side has excellent camping at places like Talbotville, with basic facilities and dozens of dispersed sites. Dispersed camping is allowed in the Park as long as the basic rules are followed and you do not camp too close to rivers or creeks. We have met a few interstate four wheel drive individuals, tag-a-long tours and clubs recently who are amazed that we have access to so many tracks and importantly that camping is free.

To whet your appetite for next summer,

here are a couple of examples of trips we have undertaken in the Park this summer. Base camped on green grass beside Shaw Creek on Kelly Lane off the Tamboritha Road. This was the week prior to Christmas. Roast chicken on a rotisserie attached to an OzPig. Camp oven slow cooked pork stew. Christmas pudding boiled up in a big billy on hot coals. A little fishing for elusive trout. Watching the antics of a family of ring tailed possums.

A mid January Land Rover Owners' Club of Gippsland trip along Moroka Road, up the rocky track to the spectacular summit of Mt Wellington with its jagged rocks, out to Millers Hut, then back to Moroka Hut and then Horseyard Hut with our journey out of the Park down Marathon Road. Number of other four wheel drives encountered: two! Not technically in the Alpine National Park but from Coongulla on the shores of Lake Glenmaggie to the summit of Ben Cruachan, which is a Scenic Reserve, and then along the edge of the Avon Wilderness Area on Avon Track (called Avon Jeep Track on some maps). Sensational views and plenty of wildlife with large lace monitors or tree goannas clambering up the tall

eucalypts. Superb secluded camping spots on the Avon River and inviting swimming holes.

There are basic supplies and fuel available at Licola and Dargo. Spend some money in these gateway townships to help keep the businesses viable. You do need to be self-sufficient after the towns and keep a constant watch on the weather. Common sense would say if there is very hot weather predicted call off the trip. Some of the tracks are steep and challenging, best tackled with more than one vehicle. Be prepared for cold weather too. Camped at the higher altitudes summer night time temperature can plummet towards low single figures. If you are entering the Park via Licola stop and read the visitor information signs put up by Four Wheel Drive Victoria and the local community. Parks Victoria have printed and online material about camping regulations. It is wise to refer to [parkweb.vic.gov.au](http://parkweb.vic.gov.au) for the latest information on temporary closures, etc.

Next summer, avoid the beach crowds and head for the hills.

**Greg Rose.**  
**FWDV Regional Representative,**  
**Southern Alpine National Park.**  
**Land Rover Owners' Club of**  
**Gippsland.**



## Products

### Piranha's Lights the Way with a new LED Wiring Harness!

Piranha Off Road Products was one of the first companies to create a wiring harness called the Super Loom, to get the best out of a vehicle's headlights and driving lights!

Aussie drivers love a brighter light for night-time driving around town or in the bush and serious drivers who compete in events also appreciate the need for good lighting that allows the best vision possible in tough conditions. LED lighting is taking over the world with light bars, head lights and driving lights all becoming the norm and providing awesome light for night time activities.

Alan Johnson, MD of Piranha, stated that, "There are a multitude of ways to

increase vision at night from different globes, higher wattage globes and the like however they will only be as good as the wiring that carries the power to that globe.



"Traditionally 4WDs and some cars had very poor halogen lighting so we developed the Super Loom kit which introduced superior wiring and relays which made the lights perform at their peak. From here we created driving light looms to get those lights firing at peak wattage as well.

"With the introduction of high output



LED lighting, the wiring was again the weak link so we developed a LED specific wiring loom which still incorporates a relay and gives vehicle owners the ability to mount their light bars pretty

much anywhere on the vehicle easily as the loom has been

manufactured with extra length."

The Aussie made LIDL3 LED loom retails for \$65.00 including GST including a 40amp relay. Piranha stocks a range of switches to suit various vehicles and can be purchased separately.

To find out more information on the "LED light bar loom or the Super Loom products contact the team at Piranha Off Road Products on 03 9762 1200. The website [www.piranhaoffroad.com.au](http://www.piranhaoffroad.com.au) has more information. Check out the Face Book page as well.



## Welcome to 4x4 Aussie Mates, a saying we hope you will get very familiar hearing as you watch our episodes on repeat.

We may look like just another 4x4 show, however were not! We are here to inspire younger generations to explore more of Australia, to learn and appreciate the wonderful experience of driving 4WD across some of the country's most challenging landscapes.

I'm Myles, host of the show and apart of the next generation of 4WD & travelling enthusiasts that are beginning to come through. Growing up I was lucky enough to come from a family that has explored vast regions of Australia. These experiences have allowed me to learn to appreciate the beauty and adventure that our beautiful country has to offer. My passion now is to just get out there, immerse myself, and enjoy our remarkable landscape and create everlasting memories with my best mates.

Tristan, my younger brother, also experienced the family adventures when growing up. He has always had a big ego, and it is shown in the way he tackles challenges, giving anything a crack at least once. He quotes himself to be a "sporty, outdoorsy kinda guy, an all-round absolute champion of a bloke".

Jack, who we all better know as Bennett, looks like he belongs at the beach wearing his flip-flops and rocking dreadlocks. Full time carpenter by trade, and 4WD enthusiast at any chance he gets. We would say Bennett is a very easy-going guy who enjoys the simple pleasures in life, good company and ice cold frothy.

Lastly, Sean, has grown up enjoying camping and the outdoors. While only recently introduced to 4wding, he knows his way around the cars better than each of us other boys. Sean loves a good banter, and will grab your interest and captivate you while talking about absolutely nothing for hours.

Together we make up the 4x4 Aussie Mates Cast.



This season has seen us traveling back and forward over the country and our weekends, to destinations in Queensland, New South Wales, South Australia, Tasmania and our home state, Victoria.

Aligning with Four Wheel Drive Victoria and becoming our own 4x4 club has been apart of our journey, attending a proficiency course and further training. We are looking forward to getting involved in volunteer work to keep our tracks open and accessible in the future.

Never have I seen so many electronics set up at once in a car, during our shoots our dashes become a tangle of leads, cameras and screens. A simple shoot would have a GoPro on the roof, controlled by a screen mounted to the passenger side of the windscreen, our VMS, GoPro recording our faces, and an audio device recording our amazing singing voices. That's before we get to all the cameras and devices we have charging all the time. Unnerving at first, I think we have all now forgotten that they're there, which may not be a good thing.

We are still looking for sponsorship and equipment, if you can see an opportunity we would love to take your money and/or products in return for some featured advertising. Please contact us directly.

Without giving too much more away, we hope that you tune in, have a laugh, and maybe even learn something off us young blokes. Follow our social media for the most up to date information to dates and outlets that the show will be available on.

You'll see us soon,

**Myles & the Team at 4x4 Aussie Mates**

Follow our Social Media Channels for updates and more content:

Instagram.com/4x4aussiemates  
Facebook.com/4x4aussiemates  
www.4x4aussiemates.com



**MALANDY**  
Outdoor Adventure

[www.malandy.com.au](http://www.malandy.com.au)

## Proud to be the leading Distributers of:



**For all you Oztent Tent, Battery, UHF\CB Radio, Bull Bar, Car\Boat\Truck Jump Starters, Solar and Exhaust needs.**

**Give us a call on 03 9017 7961 OR 1300 MALANDY  
Come and see us at 11/7 Dunstons Crt Thomastown VIC 3074**





# CHILDREN AND FOUR WHEEL TOURING

## *CARING and protecting your greatest asset*

by Brian Tanner

Four wheel driving should be a family experience, enjoyed by all members of your family. The very nature of four wheel drive touring and the 'lifestyle' that can accompany active participation can be an important family bonding agent.

Unfortunately, it is a fact of life that many families seem to grow apart as children grow up, and if through the sensible use of a four wheel drive you can develop a better relationship with your children and show them another side to life, then four wheel driving has much to commend it.

Four wheel driving provides many opportunities to pursue outdoor activities and to visit stunning and remote areas in relative safety. I have seen many families participate in four wheel drive touring and the activities associated with it. Camping, touring, appreciation of historic sites and the environment are all activities enjoyed by four wheelers.

Children love adventure and while some more sensitive individuals may actually become quite anxious in moments of difficult four wheeling, generally they thrive on the experience, and love being in the bush with mum and dad.

When travelling in any vehicle, but certainly more so in a four wheel drive, it is essential that your children are securely seated. With young children or infants do not hold them or allow them to sit unrestrained, even for relatively short journeys. A short trip is no guarantee of child safety.





Before commencing any drive ensure that all members of the family are securely and correctly restrained, with seat belts or child restraint. Make sure your 4WD has seat belts fitted for all passengers, and while many four wheelers add additional seats to the cargo area for the kids, ensure that the seat is securely mounted and that seat belts are fitted.

I have often heard from young parents that they don't think they can do any four wheel driving while their children are very young. There is nothing further from the truth if adequate precautions are taken. I have often had many groups come away on trips with young children and even very young babies. One baby in fact after being securely placed in an approved child capsule smiled and laughed all the way through one of the roughest stretches of terrain you would ever wish to travel.

The point is that if the correct child restraint system is used, there is no reason why you can't continue to enjoy four wheeling, and to introduce your children to it at a very early age.

### Children's safety in the vehicle

Vicroads warns, 'If your children aren't wearing restraints, what's stopping them'. The message is obvious and the remedy equally obvious. Fit an approved child restraint suitable for your child.

From birth to 6 months the only safe

way to restrain your child is in a baby restraint. Approved restraints include the baby safety capsule, baby commuter and safety swinger. Start with an approved infant capsule, which should be used for at least the first 6 months or until the baby can hold its head up comfortably. A baby will then progress to a child car seat, and this is suitable until the child is about 4 years old.

A booster seat is suitable for children between about 4-8 years. Used in conjunction with a harness they provide maximum safety, and allow the child a view out the window

In today's modern 4WDs they can be easily fitted.

### Child Restraints

Unfortunately child safety in cars is often seen as a low priority. Safety experts predict about 60 percent of child restraints are still not fitted properly.

While four wheeling your aim is to prevent your child sliding or falling off the seat and hurting him/ herself.

Recent RACV research has shown that over 50 percent of child restraints surveyed were incorrectly fitted, or had other faults. Like many other safety items, they are only effective if used correctly.

It is reassuring to know that Standards for Australian restraints are among the toughest in the world. For information on types of child restraints and their instal-

lation, the Child Accident Prevention Foundation of Australia, known as Kidsafe have released a book called A Parent's Guide to Kidsafe Cars, explaining how parents can make their car a safer place for their children. The book tells parents about the types of child restraints available, how to choose the right one for your child, how to fit and use the restraints, and when to move your child into a bigger restraint.

### Sharing and experiencing

Four wheel driving is a family experience. Plan trips where all the family can enjoy themselves and have the opportunity to participate in something that they enjoy.

As the driver you may enjoy the challenge of a tough drive to a remote location, but plan time for your children to engage in other activities when you arrive. This may be fishing, swimming, canoeing, walking, or just appreciating the scenery and local environment. Camping can be a great experience for children and can remain an inexpensive treat for many years to come. As children grow older provide them with their own tent and let them participate in all the camp chores, and even let them experiment with camp cooking. When travelling to bush locations or participating on a major inland trip provide plenty of stops as children can become bored, and need to run around and let off steam regularly.



12-14 Cahill St, Dandenong South, Vic. 3175

PH: 03 9768 3755 Fax: 03 9768 3617

[www.abautomatics.com.au](http://www.abautomatics.com.au)



**Authorised Automatic Transmission Remanufacturer for:-  
Land Rover, Range Rover, Nissan & Jeep**

Full Transmission Service & Repair Facilities

Diagnostics Performed Using Original Equipment Manufacturers Scan Tools

Including ZF Testman for Adaptation Reset and Learnt Data Reporting

Exchange Transmissions available for most models

Transmission Fitting Service Available

2 Year/50,000km Warranty







On longer trips plan your trip with these stops in mind, and take the time to mix a few caravan park/motel stops with the bush camping, where facilities such as a playground, and even a swimming pool can be enjoyed by the children. It will give you a chance to relax as well. When planning a trip, if your children are say over 7/8 years old involve them in the planning. An extended trip can become like a school excursion and if you take the time to explain where you are going, some of the history of the area, and even provide the children with maps of the route, they will become enthusiastic passengers and you will find the travelling time will seem shorter as your young passengers will be looking for landmarks, sights of interest and taking an active interest in your progress.

It is also an idea on long trips to provide a camera to an older youngster and to "appoint" them "official" family photographer for the trip. A little responsibility can go along way with a child and certainly add to their enjoyment and appreciation of the trip.

On long hauls with young children, as well as plenty of stops, it is a good idea to have a fridge/freezer in your 4WD and to supply cold drinks allround at regular intervals, especially if travelling in hot conditions. Similarly, it is never too early to educate children to the hazards of the sun and to get them into the slip, slop slap mode. Provide all members of the family with a suitable hat, and even a small pair of sunglasses for the children.

In the car carry a supply of books or puzzles to entertain young ones while completing long distances. It is even a good idea to allow your children to have a turn at selecting a CD of music, rather than expecting them to listen to what you like all the time. Just as you may not like some of the modern music of today, they also have their dislikes.

When packing a 4WD it is essential that you secure items in the vehicle, so that in the event of some rough terrain, or hitting a big bump at speed, items stored in the cargo area won't become



*Include plenty of activities for children to be involved on club trips*



airborne and come flying over the seat hitting passengers. In a 4WD wagon it is worth considering a cargo barrier behind the rear seat. This will allow you to pack the cargo area to the roof line, and give you piece of mind that all items will stay there, no matter how rough the road may get.

When camping it is a good idea to allocate specific chores to the children so everyone can take an active role in setting up camp. It may be the job of gathering wood for the fire, unpacking the tent, laying it out, or getting the bedding arranged. It is important that children are involved in activities as much as possible.

If possible travel with friends that also have children and this will always give the children someone to play with, and provide you with time to relax. Of course when experiencing bush camps be aware of potential hazards that may exist, and take appropriate precautions to protect your children.

Camping will always involve some contact with God's creatures so carry a comprehensive first-aid kit with ointments for bites, bandaids for scratches, etc. Depending on the type of terrain where you may camp, it is also good protection if children wear decent boots or sneakers, rather than thongs or bare feet.

Four wheel drive touring is a terrific family experience. With planning, sensible precautions and enthusiasm, you and your family can gain many wonderful moments from a 4WD trip and an overnight camp. When planning the trip, give additional thought to the needs of your children and plan to make it a safe and enjoyable experience for them. They are your responsibility and with commonsense planning you can provide them with a great experience in a very safe environment. Happy four wheeling!

**Brian Tanner**



## Firewood Collection Season

The Autumn Firewood Collection Season for 2017 started across Victoria on March 1st 2017 and will close on Friday the 30th of June. Gippsland's Assistant Chief Fire Officer, Chris Stephenson said: "Once the firewood collection season is underway, it's important that people only collect firewood from designated areas and stay within collection limits." "This includes taking a maximum of two cubic metres per person per day and a maximum of 16 cubic metres per household per financial year." "People should check where designated collection areas are in their local area. They should also check local weather and forest conditions to make sure it's safe before collecting firewood."

"Some firewood collection areas may be part of the autumn planned burning program, so it's important that you check where burns are happening. Go to [www.vic.gov.au/plannedburn](http://www.vic.gov.au/plannedburn), download the VicEmergency app or call VicEmergency on 1800 226 226."

For more information, go to: [www.delwp.vic.gov.au/firewood](http://www.delwp.vic.gov.au/firewood) or call 136 186. From the 1st of March, maps showing designated collection areas will be available through the website.

"In addition to our regular collection areas, we are making other areas available for firewood collection this autumn where there have been works such as hazardous tree removal or preparation of fuel reduction burn boundaries," Mr Stephenson said.

"The felling of any trees for firewood is strictly prohibited. DELWP and Parks Victoria staff will be patrolling parks, forests and reserves to ensure people are doing the right thing while collecting their firewood. Concealed cameras may be installed on areas of public land where firewood is being removed illegally to assist with evidence collection."

Permission from local government is needed for the collection of firewood from roadsides under their management. VicRoads does not currently allow firewood collection on roadsides it manages. Roadside collection of firewood in State forests is only allowed in a designated collection area.

Infringement Notices for illegal firewood collection are \$622.00, with maximum penalties for offences under the Forest Act 1958 standing at \$7,773.00, one year imprisonment or both.

Any information the community may have about the illegal removal of firewood for sale can be reported to DELWP on 136 186 and quote Operation Axe.





## PROJECT TALBOTVILLE

Part 2, November 2016

Land Rover Owners Club of Gippsland & Parks Victoria

### The Location.

Talbotville is a clearing that in the 1860s was the site of a small town supporting the gold mining operations along the Crooked River. Due to the area being a fertile river flat small farming operations were carried out there for some years and the last resident left in 1950. Talbotville is now an important camping area along the Iconic Four Wheel Drive Route that takes in Wonnangatta Valley and attracts four wheel drive tourers from all over Australia. "Unsealed 4x4 Magazine" an online monthly with a readership of tens of thousands, recently rated Talbotville as one of the Top Ten camper trailer/4x4 camping destinations in Australia.

### The LROCG Involvement History.

In 2014 Wayne Foon, who was at that time a Parks Victoria Ranger at Heyfield, suggested that the Land Rover Owners' Club of Gippsland might like to do some work at Talbotville. Cliff Ireland and Vicki Jones PV Dargo took this up and in November 2015 the club undertook phase one of the operation under the guidance of Rangers Vicki Jones and Dannica Shaw. In 2015 we constructed four concrete fire rings, erected three picnic tables and seat sets, cleared a significant amount of metal rubbish, cut grass around all the camping areas, chipped out thistles and erected new signposts.

### Phase Two – 2016.

The logistics and planning required to get volunteers and materials into a remote location are quite complex. Vicki Jones and Greg Rose, Four Wheel Drive Victoria Regional Representative, Southern Alpine National Park, had many meetings, email communications and onsite inspections. On Sunday the 13th of November most Land Rover Owners' Club of Gippsland volunteers and Wayne Hevey, CEO of Four Wheel Drive Victoria plus his wife Diane and Alan and Andrea, two members of the

Just Mates 4x4 Club, met up at the Dargo Hotel for dinner and stayed the night ready for an early start on the Monday. An advance group from LROCG had gone into Talbotville to set up the club tent and secured the camping area. With fuel, meals and accommodation the Land Rover Owners' Club of Gippsland and friends injected quite a bit of money into the Dargo economy for the weekend.

Significant local rain on Sunday night and into Monday morning had us a little concerned. Our convoy travelled to Talbotville via McMillan Road with Rangers Vicki and Conor Wilson slowly winding down the track with their Toyotas in low range as they were towing heavy trailers with material and equipment we would need. Vicki and Conor had travelled the route in the lead up weeks delivering aggregate to the site.

Once at Talbotville we had our safety briefing and got straight into identifying the work areas and beginning the tasks. Conor had the unenviable task of driving back to Dargo to pick up another trailer with the prefabricated picnic table and seat sets.

The weather improved and we worked well into the afternoon assisted by Gary and Mick, Parks Victoria workers from Sale. By the end of the first day most of the fire pit holes had been dug out, old and dangerous picnic tables pulled out of the ground using high lift jacks and large areas had been cleared with brush cutters. While Wayne, Diane, Alan and Andrea headed home the remaining twenty folk settled down to a well-earned bar-b-que put on by the club members. The clouds cleared just enough for a glimpse of the "super moon" event.

Tuesday was a big work day. Two more club members arrived in time for the work. Tables and seats were assembled and oiled and the folk, including chil-

dren, in their white protective clothing looked like aliens at work. Fire pits were framed up; cement mixed on site and poured then carefully finished off. The remainder of the damaged tables were removed. Thistles and blackberries were sprayed. Existing informal fire areas were removed and the scars covered with fresh soil. More long grass was cut in readiness for the summer season. Rubbish was collected and bagged up. By late afternoon all the designated tasks had been completed.

Some four wheel drive tourers from South Australia had been watching our work and were full of praise for what was being undertaken and the fantastic way our group and the Parks Victoria personnel got on together.

Tuesday evening's dinner was one of Vicki Jones's usual triumphs.

A sensational Bolognese, olive bread and individual apple and blackberry pies heated up in the camp ovens and served with cream. We even had three of our members "dressed for dinner" in crisp white shirts, bow ties, arriving to saxophone music played by one of the South Australian crew.

On Wednesday we packed up the camp, cleaned all the equipment and repacked the trailers. Our route out was along the Crooked River Track with some crossings a little deeper than usual after the recent rain. We left the Talbotville valley looking magnificent. Let's hope the summer campers appreciate and respect our work and the considerable investment in time and money from Parks Victoria.

One club member commented, as we enjoyed lunchtime hamburgers at the Dargo Store, that he felt twenty years older physically but twenty years younger mentally following an excellent "recharge" after the few days. Perhaps that's the essence of Parks Victoria's "Healthy Parks – Healthy People" motto.

The Land Rover Owners' Club of Gippsland and Parks Victoria Heyfield/Dargo under the leadership of Area Chief Ranger Mike Dower, already have plans in place for 2017. We intend to shift our focus to Horseyard Flat off the Moroka Road, another magnificent camping area that is part of the Iconic drive taking in Billy Goat Bluff Track, Wonnangatta, etc.

These exercises are another example of what can be achieved when four wheel drive clubs, under the Four Wheel Drive Victoria banner, and Parks Victoria work together for the benefit of all Park users.

### Greg Rose.

*President Land Rover Owners' Club of Gippsland.*

*Four Wheel Drive Victoria Regional Representative, Southern Alpine National Park.*





*Note: A small section of this story was inadvertently omitted last issue, so for clarity we have reprinted the entire article on such good work. Ed*



# REACH YOUR SUMMIT.

ARB Summit, the next generation of vehicle protection systems for modern four wheel drives.



ARB.COM.AU | TEL. 1300 272 494 |   



ADVENTURE  
AWAITS™



## Final edition of Nissan legend

Nissan has released its final version of the Patrol Y61 Wagon: the Legend Edition. Since 1997, the Patrol Y61 has earned an enviable reputation as one of the world's most capable and respected off-road SUVs. Nissan's Y61 Patrol (wagon) and UY61 (cab-chassis) models have been popular with customers in need of capable and dependable off-road and workhorse performance in the most testing driving terrain.

Since its Australian release in 1997, more than 104,000 examples of the Nissan Patrol Y61 wagon have been sold locally. When combined with the preceding Y60 model and the current Patrol Y62, close to 160,000 Patrol wagons have been chosen by Australian buyers since 1987.



## Nissan Patrol Y61 Wagon Legend Edition

Nissan has developed the Y61 Patrol Legend Edition to celebrate its long heritage in Australia. Based on the Y61 Patrol wagon ST, the Legend Edition comes equipped with more than \$10,000 of additional value and is limited to 300 units.

Powering the Y61 Patrol Legend Edition is the model's proven 3.0-litre turbo-diesel four-cylinder engine, delivering 118kW of maximum power and a peak torque of 380Nm (manual, between 2,000 – 2,400 rpm) and 354Nm (automatic, at 2,000 rpm).

Customers can choose from either a five-speed manual transmission or four-speed automatic transmission.

### Nissan Patrol Y62

The Nissan Patrol Y62 retains the same iconic Nissan Patrol goes-anywhere strengths that have carried the nameplate for 60 years and six generations.

This sixth generation Patrol model boasts the power of an efficient and muscular 5.6-litre V8 petrol engine, driving through an advanced seven-speed automatic transmission and a sophisticated, electronically controlled, ALL MODE 4X4 system.

Suspension is independent all round, a departure from the live axles of the previous generations, helping enhance off-road traction.

The Nissan Patrol Y62's body is larger than previous generations, delivering luxurious accommodation for up to eight passengers (Ti model grade; seven seats in the range-leading Ti-L model grade). Drive away price starts at \$78,393.

## Upgraded Amarok



Volkswagen's range of four cylinder Amaroks have received upgrades to their interiors and exterior features, as debuted in the highly-popular V6 Amarok range, launched in November 2016.

All four-cylinder Amarok models receive an updated interior design which incorporates the latest in safety, convenience and connectivity. New standard features for all four cylinder Amaroks include Multi-Collision Braking system, a Composition Media unit with App-Connect, which features Apple CarPlay and Android Auto connectivity and offers the functionality of rear-view camera and rear parking sensors (not available on cab chassis models) standard all on 4x4 models and optional on 4x2 models.

Of all the upgrades in the Amarok four-cylinder range, the value-laden Core Plus 4x4 model receives the most number of updates, largely replacing the previous Highline specification, which is currently reserved for V6 specification. On top of the updated interior and exterior designs and infotainment updates, the Core Plus model also includes carpet floor covering, an upgraded cloth seat trim, front parking sensors, additional 12-volt sockets, body coloured mirrors and door handles, rear grab handles and interior lights and the post-collision braking system.

## Mercedes off roader

Mercedes has launched a cab chassis version of its G-Class 4x4. The G-Professional can carry a 2085kg payload, has a 245mm ground clearance, three differential locks that can be shifted to low range on the move, 650mm fording depth and adjustable engine speed control. Pricing starts from \$119,900.

## Land Rover Discovery

The fifth generation Land Rover Discovery goes on sale from July 2017 from \$81,590. It will be 480kg lighter thanks to aluminium construction, offers a 177kW four cylinder diesel engine and has a 3500kg towing capacity. It will also feature seven full-sized adult seats that can be configured from your smartphone.





## The journey ... or the destination?

Heading out to the bush on your next four wheel drive trip, you are looking forward to a fun and enjoyable day. On this trip, you have decided to take a couple of friends along in your vehicle with you to introduce your friends to the comradery of your 4WD Club. You begin packing the essentials; recovery gear, first aid kit, the fridge and the food and finally everyone starts adding their "little bit" until there is barely enough room for anyone to sit.

Remember most vehicles will drive differently when you have a number of people and their gear so you will need to drive accordingly.

Some thought should be given as to how you will pack each of the above items in or on your vehicle, because overloading your vehicle can be just as dangerous as not taking along the right gear in the first place.

The extra weight can cause poor balance and unnecessary stress on your vehicle, so try to pack accordingly, being careful not to overload your vehicle. Ultimately, which tools, equipment, and spare parts you take along

will depend on where you are going and for how long.

It is extremely important to keep all of the items you've loaded in your vehicle securely strapped down or safely stowed away, because loose items could become projectiles when you make a sudden stop or take off a bit too quickly. You should use heavy-duty straps (not bungee cords) to secure items in your vehicle.

Contain and strap down anything that will hurt if it hits you. Remember that all supplies inside your vehicle should be contained in some way that will prevent bodily injury especially if you are driving through rough terrain or hill country.

If you invite non-members along on your club trip, remember to take out a Temporary Membership for your guests to ensure compliance with your clubs rules as well as ensuring they will have all the insurance coverage of a full member in the event of any incident.

This not only protects you and your club, it protects your guests too! Plan to enjoy the day, allow extra time so you don't have to rush and

remember what it is like as a passenger in the back seat especially on winding roads and hills. Is the purpose of your trip simply to get to a destination or is it more to enjoy the journey and the friends you are spending time with?

Safe travels



## Affinity Insurance

### We do more than 4WD Insurance

At Affinity Insurance Brokers we are proud of our long association with Four Wheel Drive Victoria. We can also assist club members with insurance solutions for the following;

- Business & Commercial Insurance
- Private & Commercial Vehicle Insurance
- Home & Contents Insurance
- Farm & Rural Property Insurance
- Life & Income Protection
- Personal Accident Insurance



Insurer  
**CGU Insurance Limited**  
ABN 27 004 478 371

To discuss your insurance needs contact Affinity Insurance Brokers now!

Call **1300 655 850**

Email [info@affinityib.com.au](mailto:info@affinityib.com.au)

Visit [www.affinityib.com.au](http://www.affinityib.com.au)

This product is issued by CGU Insurance Limited, ABN 27 004 478 371, AFS Licence No. 238291 and distributed by Affinity Risk Partners (Brokers) Pty Ltd trading as Affinity Insurance Brokers ABN 15 091 944 580 Licence No. 241185. It is subject to underwriting acceptance criteria. This is a summary of the benefits available. Conditions apply. To decide if it is right for you please read the Product Disclosure Statement and Policy before you make any decision.



# ENGEL

A LEGEND IN RELIABILITY®

SAWA  FUJI



## DRAWER FRIDGE

**Model: SB30G**

**30 Litre Capacity (35 x 375ml Cans)**

**New Compact Sawafuji Swing Motor**

**Steel Cabinet**

**Solid Construction**

**Stainless Steel Runners**

**Internal LED light**

**Built in Ventilation with dual fans**

**Auto Switching 12 – 24 Volt DC**

**Power consumption 2.7 Amps (12 Volt)**

**1.5 Amps (24 Volt)**

**Compressor unit can be remotely located upto**

**1.5 Metres away**

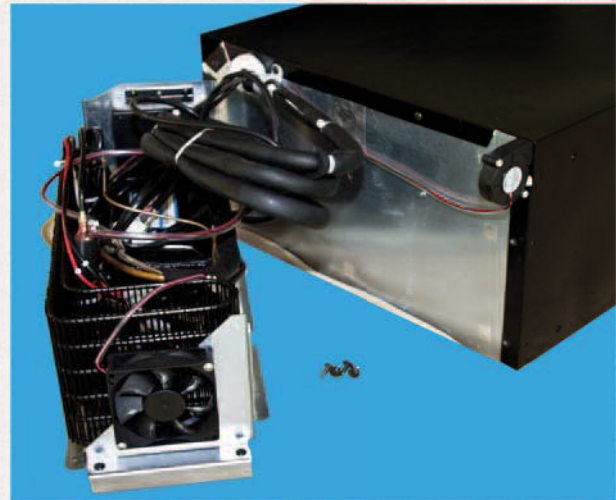
**Dimensions:**

**Overall (including door and compressor)**

**L716 W440 H250mm**

**Cabinet only: L525 W440 H250mm (compressor mounted remote)**

**For further information; [info@engelaustralia.com.au](mailto:info@engelaustralia.com.au)**



**ENGEL**

For more information or  
your nearest stockist, visit  
[www.engelaustralia.com.au](http://www.engelaustralia.com.au)





# *Patrol*apart

NISSAN PATROL SPECIALIST



PATROLAPART.COM.AU

Thousands of parts available online.  
We import genuine parts to bring you better prices!

Call 03 9735 9099  
[sales@patrolapart.com.au](mailto:sales@patrolapart.com.au)